



HAIGHArchitects llc

2 Bolling Place Greenwich , CT 06830
203 869 5445

*selections*2017

Selected Writings and Recent Publications



Glass is Tomorrow : Pro Materia 2015

The Glass is Tomorrow book is co-edited by Archibooks and Pro Materia. The project looks to recap 9 design workshops, held between 2011 and 2015. Featuring over 400 pieces and prototypes, for limited edition or mass production, the Glass is Tomorrow collection exemplifies reflection, experimentation and co-creation. The edition features an introduction by Glass is Tomorrow Pro Materia director Lise Coirier; with exclusive profiles of MUDAC Lausanne's Bettina Tschumi, Domaine de Boisbucet's Alexander von Vegesack, and GlassLab's co-creator Paul Haigh.



1,000 Product Designs: Form, Function, and Technology from Around the World by Eric Chan

Product design has changed dramatically in recent years as everything, from computers to microwaves to MP3 players, has become more compact and more powerful. 1,000 Product Designs features the most innovative designs in recent years. This unprecedented collection of products from all over the globe is a window into different cultures and societies, featuring everything from furnishings to personal items and accessories to electronics. Included are Paul Haigh designs for lighting and glass.



30 Years of Emerging Voices : Idea Form Resonance

Published by Princeton Architectural Press. In an unprecedented collection of design projects and practices including HAIGHArchitects, 30 Years of Emerging Voices: Idea, Form, Resonance documents close to 250 of the most innovative North American design firms of the past three decades. Since 1982 The Architectural League of New York's Emerging Voices program has recognized architects, landscape architects, and urban designers whose distinctive voices promise to influence architectural discourse, design, and practice for years to come.



INA 10 : International New Architecture : August 2012 Volume 3

International New Architecture collaborates with the American Institute of Architects, featuring first class design firms and their works with it's professional vision and publishing experience. INA 10 features HAIGHArchitects Corning Museum of Glass : Contemporary Sculpture Galleries. Emphasis is placed on high resolution images and drawings and analyzes the firm's unique design concepts and practice in vivid and detailed form.



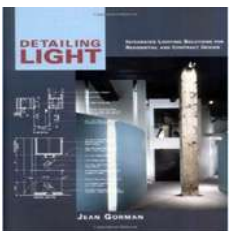
Scoprire il Design : Adventures with Objects : Electra

The accompanying book to the exhibition Scoprire il Design : Adventures with Objects curated by Mathias Schwartz-Claus includes an essay by Paul Haigh : Collective Experiences: Architecture and Design in Process at the Domaine de Boisbucet, an international cultural centre where, since 1996, Alexander von Vegesack has organized a series of architecture and design workshops together with the Pompidou Centre and the Vitra Design Museum.



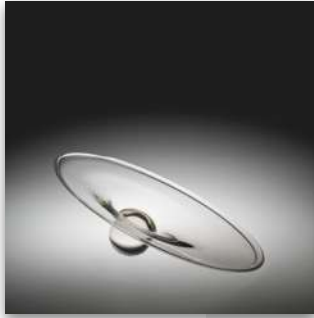
Knoll : A Modernist Universe by Brian Lutz : Rizzoli

The history of Knoll is the history of modern design. Comprehensive in narrative and scope, this monograph is a classic in its own right with images and texts on furniture, furnishings, systems, graphics, and unique insight into the modern world that is Knoll. Included are furniture and architecture projects designed by Paul Haigh in his early work for Knoll.



Detailing Light : Integrated Lighting Solutions by Jean Gorman

In this overview of lighting design, a variety of architectural spaces are profiled to show lighting designs that meet highly specific demands. Including several projects by HAIGHArchitects, Detailing Light is lavishly illustrated with a full descriptive text of individual lighting solutions within the context of the overall project. A forward, by Paul Haigh, examines the emotional and creative process essential to creating interior environments that fully integrate architecture and the developing technology of artificial light.



GlassLab : Gravity Plate



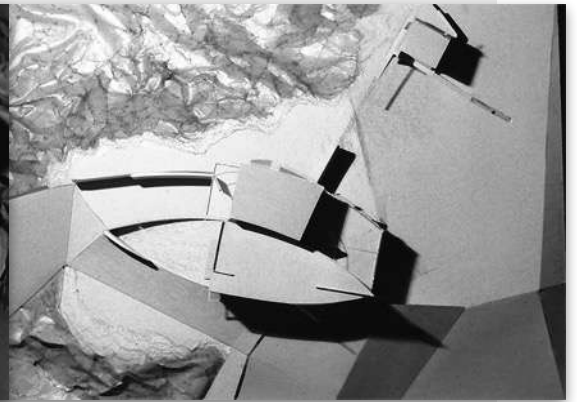
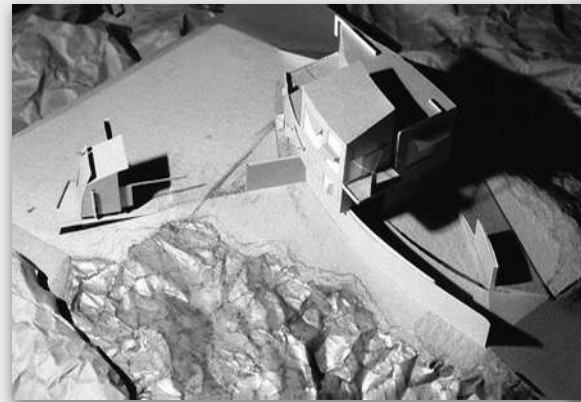
INA International New Architecture : Featured Project



Fiam : Enoteca Wine storage



IFDA : Branch



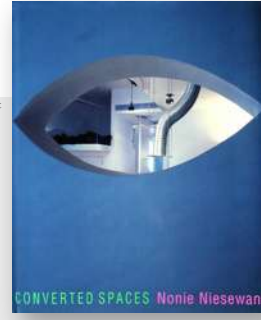
Studio House : Site Model



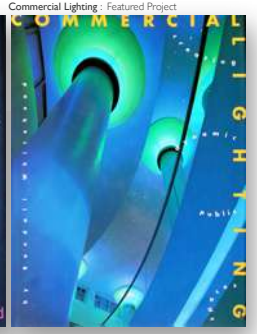
Royal Institute of British Architects : Sessay Community Hub Competition : Elevations and View



Ottoman Empire : Table Collection



Converted Spaces : Cover Project



Commercial Lighting : Featured Project

CONVERTED SPACES Nonie Niesewand



mc2 : Retail Store



Corning Museum of Glass : Bridge Gallery



Corning Museum of Glass : GlassMarket Cafe

Bieffplast : Tux Chair and Table

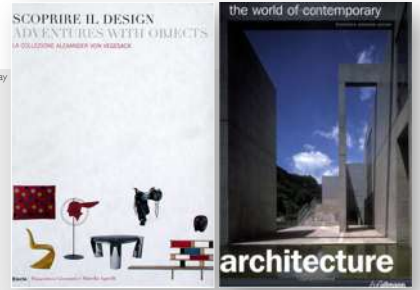


Corning Museum of Glass : Contemporary Sculpture Galleries



ArtemideUSA/Rezek : Peak Architectural Lighting

Scoprire Il Design : Featured Essay



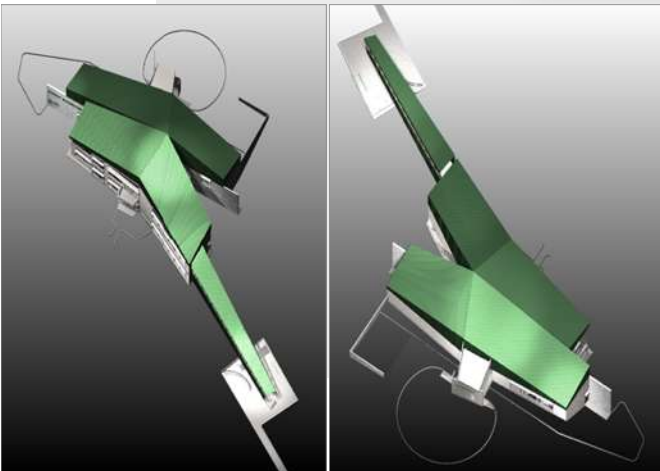
Architecture : Featured Project



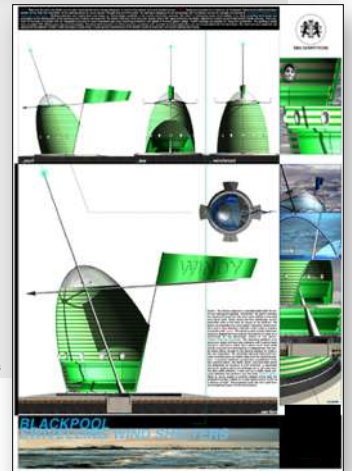
Corning Museum of Glass : Contemporary Glass Galleries



National Parks Service : Heritage Visitors Center



RIBA Competitions : Blackpool Wind Shelters





IFDA Competition : Glance Seating

1000 Product Designs : Featured Projects



Paramount Hotel Lobby

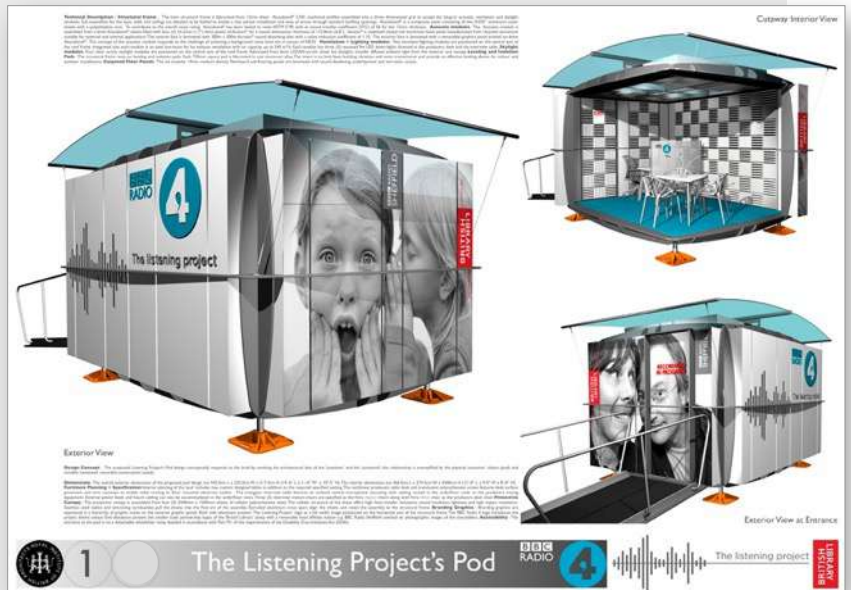
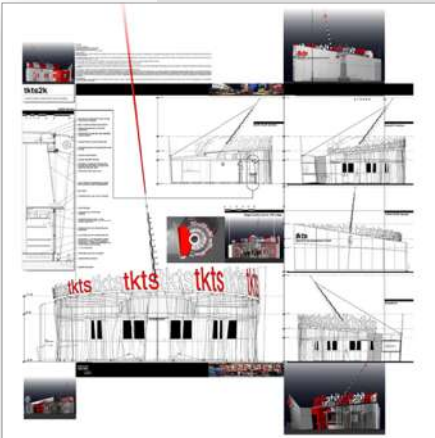


Knoll Design Center



Paramount Hotel Lobby

Van Alen Institute : Theatre Development Fund tkts Competition



RIBA Competitions : The Listening Project Pod



Flight93 National Memorial Competition



IFDA :...springboard

Knoll : A Modernist Universe : Featured Projects



Corning Museum of Glass : Ramp Gallery

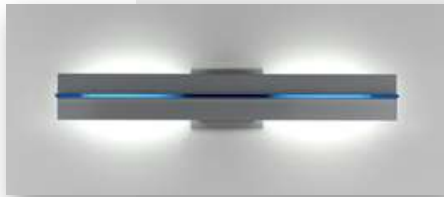


Knoll Design Center



Corning Museum of Glass : Contemporary Glass Sculpture Galleries

ArtemideUSA/Rezek : slice lighting



Corning Museum of Glass : New Glass Galleries

