



Corning Museum of Glass: The GlassLab

| 康寧玻璃博物館之GlassLab | HAIGH Architects



• 概念

GlassLab是一個獨特的移動熱玻璃工作室和舞臺。由HAIGH Architects設計。康寧玻璃博物館負責在全球運輸并裝配GlassLab裝置。模块化的玻璃使設備需要的能源最小化并使用了高效能源。GlassLab給了設計師一個難得的機會與大師級玻璃技術人員共事，以了解快速發展的玻璃業。

• GlassLab裝置

GlassLab 2008年在庫珀-休伊特國家設計博物館。每年的“玻璃實驗室”裝置都被設計成靈活的设计展示舞臺。利用超輕便熱玻璃裝置。不管在哪裏都能現場裝配出最多的種類。在2008年，設計展示會議在紐約市的庫珀-休伊特國家設計博物館花園內舉行。給這些會議提供一個典型的GlassLab舞臺需要一個可變換的國際運輸集裝箱。





• GlassLab在designMiami/2007/2008

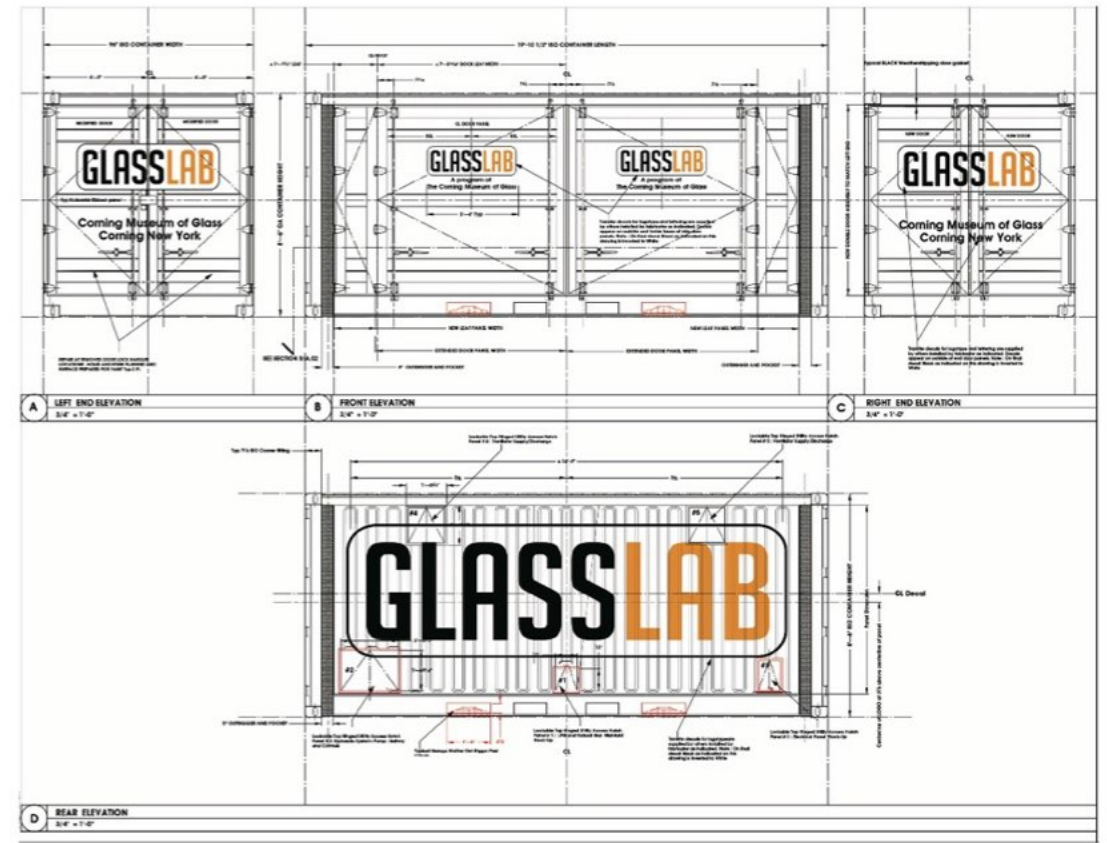
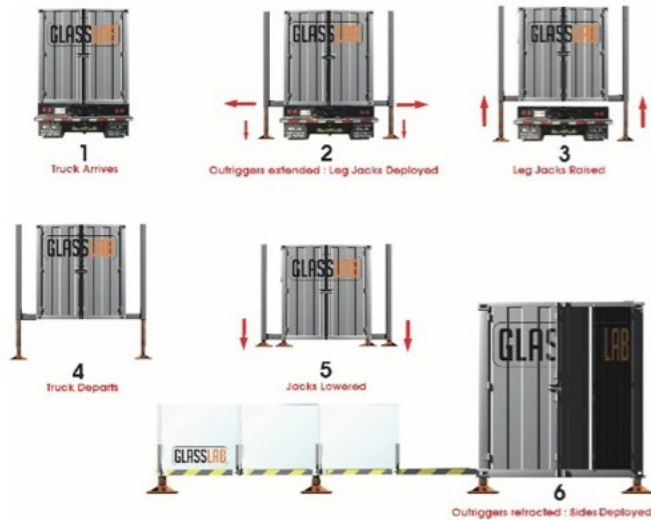
在designMiami/2007/2008展覽期間, GlassLab裝置在邁阿密設計區的橡樹廣場展出。一個定制的張力天篷結構由強化聚酯纖維織成, 明確了主要的舞臺區域, 作為一個光板, 它在夜晚被投上了多種色彩。

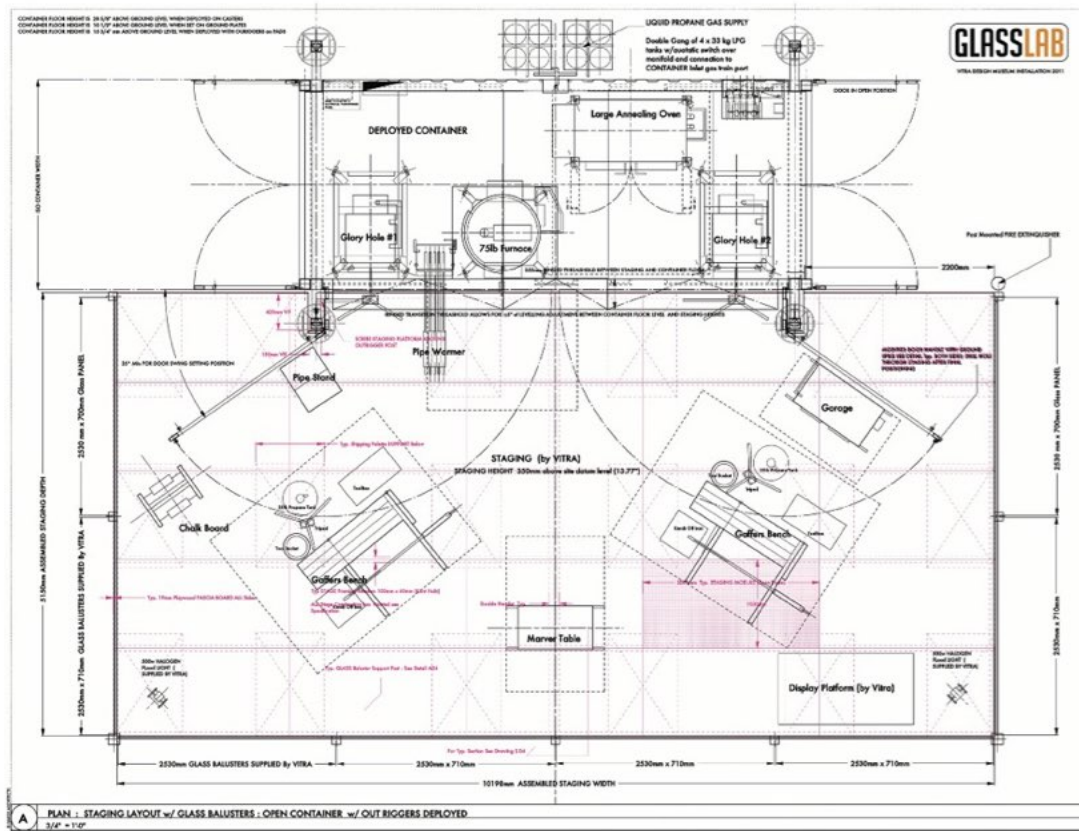
• GlassLab在德國萊茵河畔魏爾的威察設計博物館2010/2011展覽

威察設計博物館內的GlassLab裝置在artBasel2010展示期間標志著新的GlassLab集裝箱/舞臺/天篷國際裝置的開啓。博物館出入口附近的設計展示會議由許多國際設計師承辦。

• GlassLab裝箱/舞臺和天篷

GlassLab集裝箱是一個獨一無二的標準國際運輸集裝箱, 利用一個自我抬升支架系統, 這種設計可以在世界上任何地方進行裝配。6米長的底座可以用作公共活動或私人教育討論會的場地。電氣配送的綜合系統和一大批小型化的玻璃形成了設備元件。





• Concept

GlassLab is a unique mobile hot glass studio and stage, designed by HAIGHArchitects and the Corning Museum of Glass to ship and deploy at GlassLab installations worldwide, it features modular glass making equipment that utilize minimal power requirements and efficient



energy consumption. GlassLab offers designers a rare opportunity to work with master glass technicians to realize rapidly prototyped concepts in glass.

• GlassLab Installations

GlassLab Cooper-Hewitt National Design Museum 2008
The annual GlassLab installations are designed as flexible design performance stages. Utilizing the ultralight portable hot glass making equipment, each venue is configured to maximize the variety glass making processes on hand. In 2008, Design Performance sessions were presented in the garden of the Cooper-Hewitt National Design Museum in New York. For these sessions a prototypical GlassLab stage was developed in a converted international shipping container.

• GlassLab designMiami/2007/2008

Presented at designMiami/2007/2008 the GlassLab installations were staged in Oak Plaza in the Miami Design District. A custom designed tensile overhead canopy structure, fabricated from carbon fiber reinforced polyester, defined the main stage area. Acting as

a light baffle, multicolored effects were projected during night performances.

• GlassLab Vitra Design Museum 2010/2011: Weil Am Rhein, Germany

The GlassLab installation at the Vitra Design Museum during artBasel2010 marked the inaugural international installation of the new GlassLab container/stage/canopy. Adjacent the museum entrance, Design Performance sessions were presented by a roster of international designers.

• GlassLab Vitra Container/Stage and Canopy

The GlassLAB container is a unique adaptation of a standard international shipping container. Designed to be deployed at any location worldwide utilizing a system of self lifting outriggers, the 6 m base unit can be stage for public events or private educational workshops. Integrated systems for electrical and gas distribution service and array of miniaturized glass making equipment and furnaces.

Credits:

Architects and Designers: HAIGHArchitects
Project Design Team: Paul Haigh, Lewis Olsen, Fred Metz, Bruce McFarland
Corning Museum of Glass: GlassLab Events Team: Steve Gibbs, Eric Meek
Graphics: Elizabeth Q. Cassetti
Illustrations: Paul Haigh
Photographers: Deide von Schaefer, Frank Borkowski, Paul Haigh

